

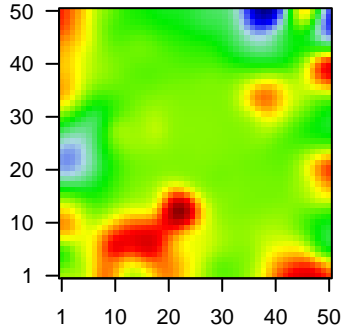
# MPI-248

## Global Summary

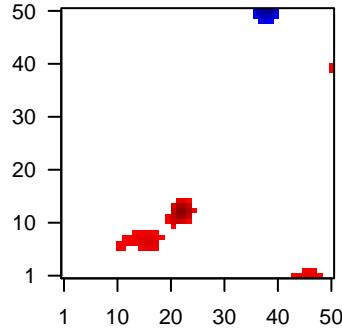
%DE = 0.06  
 # genes with  $fdr < 0.2$  = 903 ( 515 + / 388 - )  
 # genes with  $fdr < 0.1$  = 636 ( 368 + / 268 - )  
 # genes with  $fdr < 0.05$  = 498 ( 298 + / 200 - )  
 # genes with  $fdr < 0.01$  = 322 ( 208 + / 114 - )  
  
 # genes in genesets = 13152

<FC> = 0  
 <t-score> = -0.05  
 <p-value> = 0.23  
 <fdr> = 0.94

Portrait



Regulated Metagenes



## Global Genelist

Rank	ID	log(FC)	fdr	Description
		p-value		Metagene
1	201123_s_at	-1.71	2e-16	2e-13 1 x 43 eukaryotic translation initiation factor 5A [Source:HGNC Syml
2	201403_s_at	-1.39	2e-16	2e-13 6 x 4 microsomal glutathione S-transferase 3 [Source:HGNC Syml
3	203962_s_at	2.23	2e-16	2e-13 38 x 32 nebulette [Source:HGNC Symbol;Acc:HGNC:16932]
4	204268_at	2.25	2e-16	2e-13 22 x 12 S100 calcium binding protein A2 [Source:HGNC Symbol;Acc:
5	204562_at	-1.38	2e-16	2e-13 0 x 20 interferon regulatory factor 4 [Source:HGNC Symbol;Acc:HGI
6	205373_at	2.49	2e-16	2e-13 17 x 6 catenin alpha 2 [Source:HGNC Symbol;Acc:HGNC:2510]
7	205504_at	-1.86	2e-16	2e-13 43 x 36 Bruton tyrosine kinase [Source:HGNC Symbol;Acc:HGNC:11
8	206413_s_at	2.3	2e-16	2e-13 43 x 49 T cell leukemia/lymphoma 1B [Source:HGNC Symbol;Acc:HC
9	207935_s_at	2.3	2e-16	2e-13 22 x 12 keratin 13 [Source:HGNC Symbol;Acc:HGNC:6415]
10	209125_at	2.48	2e-16	2e-13 22 x 12 keratin 6A [Source:HGNC Symbol;Acc:HGNC:6443]
11	209351_at	2.68	2e-16	2e-13 22 x 12 keratin 14 [Source:HGNC Symbol;Acc:HGNC:6416]
12	210546_x_at	2.69	2e-16	2e-13 10 x 27 cancer/testis antigen 1A [Source:HGNC Symbol;Acc:HGNC:2
13	211674_x_at	2.72	2e-16	2e-13 10 x 27 cancer/testis antigen 1A [Source:HGNC Symbol;Acc:HGNC:2
14	213308_at	2.43	2e-16	2e-13 17 x 27 SH3 and multiple ankyrin repeat domains 2 [Source:HGNC S
15	213796_at	2.3	2e-16	2e-13 22 x 12 small proline rich protein 1A [Source:HGNC Symbol;Acc:HGNC
16	214580_x_at	2.85	2e-16	2e-13 22 x 12 keratin 6A [Source:HGNC Symbol;Acc:HGNC:6443]
17	215733_x_at	2.54	2e-16	2e-13 10 x 27 cancer/testis antigen 1A [Source:HGNC Symbol;Acc:HGNC:2
18	217339_x_at	2.51	2e-16	2e-13 10 x 27 cancer/testis antigen 1A [Source:HGNC Symbol;Acc:HGNC:2
19	217469_at	2.4	2e-16	2e-13 49 x 20 immunoglobulin heavy constant epsilon [Source:HGNC Syml
20	206219_s_at	-1.36	1e-15	1e-11 26 x 48 vav guanine nucleotide exchange factor 1 [Source:HGNC Syr

## Global Geneset Analysis

Rank	GSZ	p-value	#all	Geneset
<i>Overexpressed</i>				
1	15.9	NULL	105	Reference:GSE11111
2	13.16	NULL	248	GSEA C2JAEGER_METASTASIS_DN
3	12.86	NULL	78	BP cornification
4	11.31	NULL	72	BP keratinization
5	10.79	NULL	44	MF antigen binding
6	10.49	NULL	431	BP immune system process
7	10.41	NULL	18	CC MHC class II protein complex
8	10.13	NULL	12	MF MHC class II receptor activity
9	10.03	NULL	17	BP antigen processing and presentation of peptide or polysaccharide
10	9.86	NULL	51	GSEA C2HUPER_BREAST_BASAL_VS_LUMINAL_UP
11	9.82	NULL	46	GSEA C2BOSCO_EPITHELIAL_DIFFERENTIATION_MODULE
12	9.79	NULL	16	MF immunoglobulin receptor binding
13	9.78	NULL	453	GSEA C2ONDER_CDH1_TARGETS_2_DN
14	9.76	NULL	76	HM HALLMARK_INTERFERON_ALPHA_RESPONSE
15	9.73	NULL	52	BP complement activation, classical pathway
16	9.72	NULL	23	CC integral component of luminal side of endoplasmic reticulum mem
17	9.52	NULL	40	BP antigen processing and presentation
18	9.42	NULL	263	Lymphoma:GSE11111_PANG_CD40 6hrs UP
19	9.14	NULL	26	GSEA C2MOSERLE_IFNA_RESPONSE
20	9.11	NULL	57	Pneumonia:GSE11111_PANG_viral_UP
<i>Underexpressed</i>				
1	-23.01	NULL	319	Melanoma:GSE11111_serber_wt/wt_melanoma-cells-SpotA
2	-21.84	NULL	137	GSEA C2ROSTY_CERVICAL_CANCER_PROLIFERATION_CLUSTER
3	-21.48	NULL	115	Glioma WILLSCHER_GBM_Verhaak-CL_up ( C
4	-20.9	NULL	244	GSEA C2KOBAYASHI_EGFR_SIGNALING_24HR_DN
5	-19.47	NULL	431	GSEA C2SOBERT_OLIGODENDROCYTE_DIFFERENTIATION_UP
6	-18.9	NULL	14	Cancer SOTIRIOU_BREAST_CANCER_GRADE_1_VS_3_UP
7	-17.49	NULL	254	GSEA C2DUTERTRE ESTRADIOL_RESPONSE_24HR_UP
8	-17.27	NULL	526	GSEA C2MARSON_BOUND_BY_E2F4_UNSTIMULATED
9	-16.58	NULL	93	GSEA C2CROONQUIST_IL6_DEPRIVATION_DN
10	-16.33	NULL	439	GSEA C2SHEDDEN_LUNG_CANCER_POOR_SURVIVAL_A6
11	-16.28	NULL	52	GSEA C2KANG_DOXORUBICIN_RESISTANCE_UP
12	-16.08	NULL	174	GSEA C2GRAHAM_CML_DIVIDING_VS_NORMAL_QUIESCENT_UP
13	-15.96	NULL	117	GSEA C2CHANG_CYCLING_GENES
14	-15.5	NULL	400	GSEA C2PUJANA_BRCA2_PCC_NETWORK
15	-15.23	NULL	187	HM HALLMARK_E2F_TARGETS
16	-15.14	NULL	81	GSEA C2KONG_E2F3_TARGETS
17	-14.88	NULL	102	GSEA C2WHITEFORD_PEDIATRIC_CANCER_MARKERS
18	-14.79	NULL	84	GSEA C2GRAHAM_NORMAL_QUIESCENT_VS_NORMAL_DIVIDING_DN
19	-14.61	NULL	108	GSEA C2ZHOU_CELL_CYCLE_GENES_IN_IR_RESPONSE_24HR
20	-14.59	NULL	1052	GSEA C2DODD_NASOPHARYNGEAL_CARCINOMA_DN

p-values

